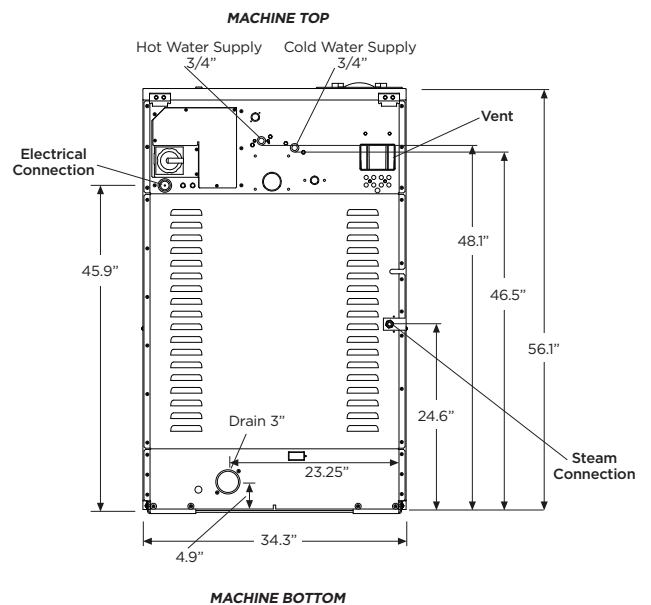
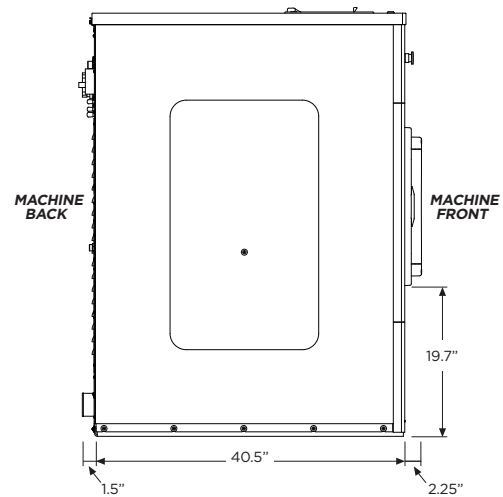
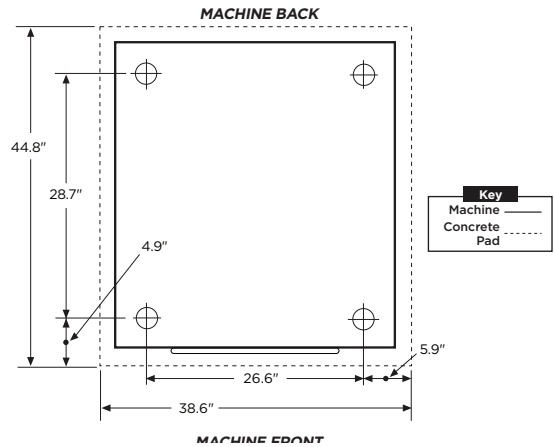


RMG055

VENDED G-FLEX HARD-MOUNT WASHER-EXTRACTOR

PRODUCT SPECS

Capacity <i>lbs</i>	55
Cylinder Diameter <i>inch</i>	27.6
Cylinder Depth <i>inch</i>	23.1
Cylinder Volume <i>cu ft</i>	8
Net Weight <i>lbs</i>	741
Crated Weight <i>lbs</i>	807
Machine Dimensions <i>inch</i> WxDxH	34.3 x 44.8 x 56.1
Door Opening <i>inch</i>	16.8
Floor to Door <i>inch</i>	19.7
Shipping Dimensions <i>inch</i> WxDxH	35.3 x 46.1 x 61.6
Washing Speed <i>rpm</i>	45
Spin Speed <i>rpm</i>	45/100/360/505/600/715
G-force	50/100/140/200
Static Force Transmitted <i>lbs</i>	1052
Dynamic Force Transmitted <i>lbs</i>	2487
Frequency of Dynamic Force <i>Hz</i>	11.9
Available Voltages/Wire Conductor/Amp	208-240/60/1, 2W+G, 10
Drain Diameter <i>inch</i>	3
Water Inlets <i>inch</i>	2 @ 3/4
Recommended Water Pressure <i>PSI</i>	30-60
Water Flow <i>gal/min</i>	16
Steam Connection <i>inch</i>	1/2
Total Power <i>kW</i>	1.05



* Specifications subject to change without notice or obligation. Contact Continental Girbau at (800) 256-1073 for dimensions not shown or for clarification.

